

Vibration detector
VD-10

Ordered by _____

Name of Client _____

FOR APPROVAL

Drawing No.	CSES-14-0776-1
Project No.	
Date Issued	December 12, 2014

Charged by	Approved by
y. Miura	J. Shinjima

TOKYO KEIKI INC.
MEASUREMENT SYSTEMS COMPANY

INDEX

1	Components	
2	Warranty Terms	
3	Vibration detector Specifications	
4	Vibration detector VD-10 Outline drawing	6499049700
5	Vibration detector VD-10 Wiring diagram	6499049800

Components

No	Name	Type	Specifications	Q'ty
1	Vibration detector	VD-10		1

Warranty Terms

- (1) We warrant that the products shall be free from defects in design or material or workmanship for 12 months after shipment from Japan, without following cases :
- a) Defects due to an act of God (ex. Typhoon, Earthquake, Thunder and so on)
 - b) Defects due to other causes (ex. Power Supply, Air Supply, Any utility and so on)
 - c) Defects due to altering or repairing, excepting for manufacturer
 - d) Defects due to sever conditions exceeded conditions of usage environment, transportation and storage that were instructed by manufacturer
 - e) Defects due to using and storage under corrosive atmosphere
 - f) Defects due to no proper replacement of expendables
 - g) Defects due to unreasonable handling and/or improper operation by users
- (2) The foregoing warranties are the sole and exclusive warranties given by the manufacturer. We shall have no other liability or obligation against consequential damage due to mis-working and/or poor performance of our products in any cases, other than as stated in this article

Vibration detector VD-10 Specifications

1 Setting range of acceleration

- Setting range :0 to 44.1m/s²(0 to 4.5G)
- Recommended Setting range :4.9 to 44.1m/s²(0.5 to 4.5G)
- Minimum setting interval :0.98m/s²(0.1G)

*)If a product is installed horizontal, it's the above setting range and recommended setting range value.

*)Please acceleration set to below 4.9m/s²(0.5G).

2 Measurement frequency range :0 to 300Hz

3 Alarm output

- Output form :Relay output
- Contact form :S.P.D.T.
- Contact capacity :125/250 V AC、 3A(resistive load)
:48V DC,1A(resistive load)
:125V DC,0.5A(resistive load)
:250V DC,0.25A(resistive load)

4 Accuracy :±2.21m/s²(±0.225 G)

5 How to reset :Reset button operation (manual reset) The remote reset by power supply (remote reset)

6 Reset power :100 to 125 V AC/DC 50/60Hz

7 Reset coil rating :100V AC/DC - 5 minutes 110V AC/DC - 3 minutes 115V AC/DC - 2.5 minutes 125V AC/DC - 2 minutes

8 Power consumption :12 VA or less

9 Environmeter conditions

- Operating temperature :-20 to +80°C
- Humidity :10 to 95 % RH or less (non condensation)

10 tructure

- Waterproof structure :IPx4
- Explosion-proof structure :non-explosion structure

11 Conduit port :R_C 3/4

12 Main material

· Mount

:Aluminum casting(AC4C)

· Cover

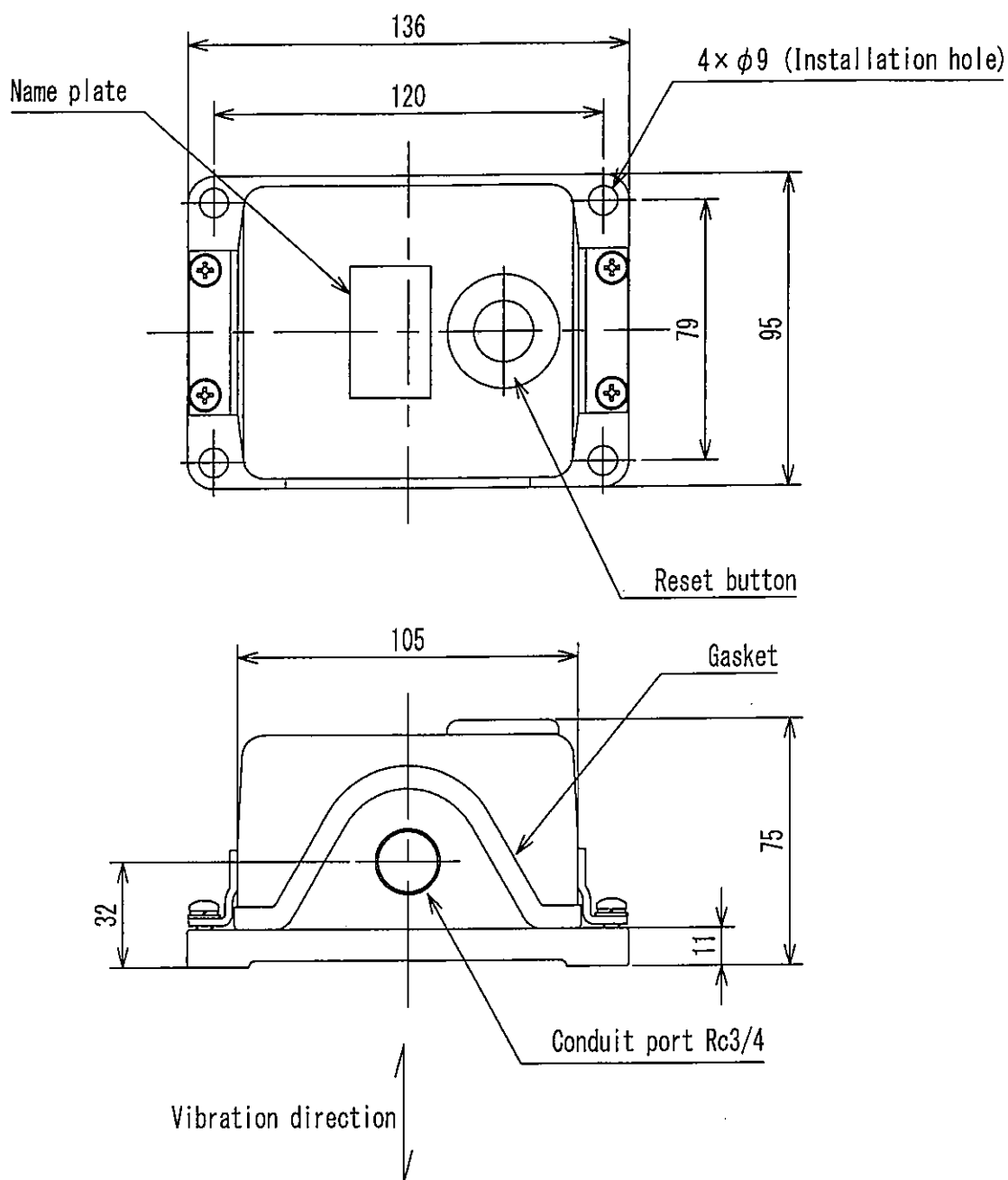
:Aluminum alloy plate(A5052)

13 Color of painting

:Hammer tone Baked,N7

14 Weight

:Approx 0.9kg



				Vibration detector VD-10			
MARK	B付DATE	変更項目 REVISION	担当 SIGN	製 図 DRAWN BY	設 計 CHARGED BY	検 図 CHECKED BY	承 認 APPROVED BY
記事 NOTE			サイズ SIZE A	Y. Miura	Y. Miura	A. Kamada	Y. Shinozaki
TOKYO KEIKI 東京計器株式会社 TOKYO KEIKI INC.				尺 度 SCALE 1 : 2	図 番 DRAWING NO.		REV
			日 付 DATE 2014-12-12	64990497		0.0	SHT 1/1

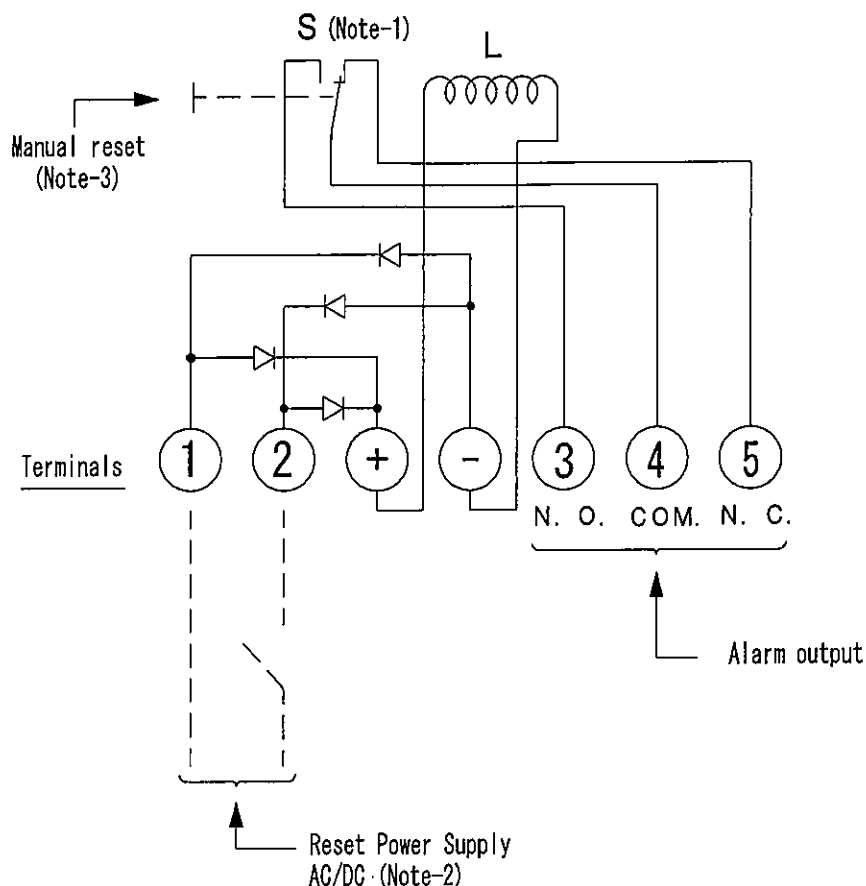
L : Reset coil

- Rating 100VAC/DC - 5min
- 110VAC/DC - 3min
- 115VAC/DC - 2.5min
- 125VAC/DC - 2min
- Current 0.23A(max)

S : Microswitch

Alarm output

- Output form Relay output
- Contact form S. P. D. T.
- Contact capacity 125/250VAC, 3A
(Resistive Load) 48VDC, 1A
125VDC, 0.5A
250VDC, 0.25A



Note-1) The microswitch (S) in the above circuit shows "Reset" position.

The position will be switched when this detector gets abnormal vibration.

Note-2) This power supply is for remote resetting by exciting coil.

Note-3) This is a reset button for manual reset.

Note-4) Use 1.25mm²wire (AWG16) or more for power supply.

				Vibration detector VD-10 Connecting diagram			
MARK	DATE	変更項目 REVISION	担当 SIGN	製 図 DRAWN BY	設 計 CHARGED BY	検 図 CHECKED BY	承 認 APPROVED BY
記事 NOTE			サイズ A	A. Kamekura		M. Watanabe	J. Shinjima
TOKYO KEIKI INC.			尺 度 SCALE B 付 DATE	図番 DRAWING NO. 2014-12-08 64990498		REV 0.0	SHT 1/1